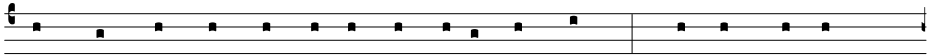


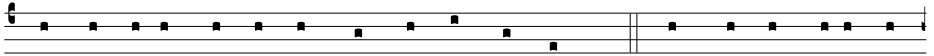
Psalm 12

Salvum me fac

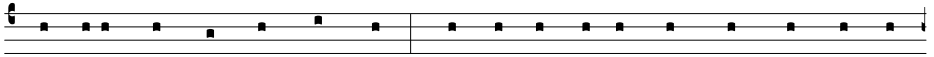
tone IV4



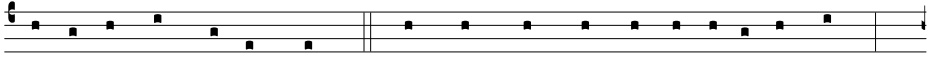
HELP me, Lord, for there is not one godly man left: for the faithful



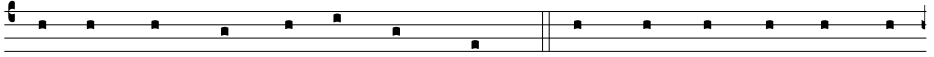
are min-ished from a-mong the children of men, 2. They talk of vani - ty



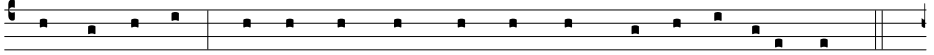
ev - ery one with his neighbour: they do but flatter with their lips, and dis-



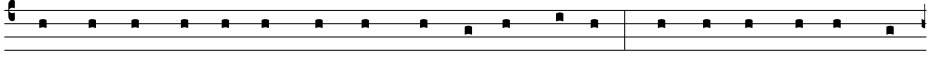
semble in their double heart. 3. The Lord shall root out all deceitful lips:



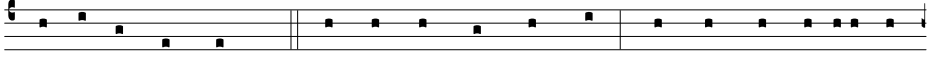
and the tongue that speaketh proud things; 4. Which have said, With our tongue



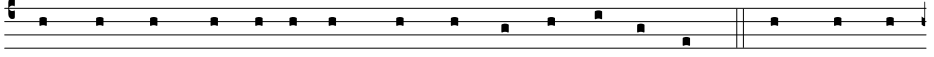
will we prevail: we are they that ought to speak, who is lord over us?



5. Now for the comfortless trouble's sake of the needy: and because of the deep



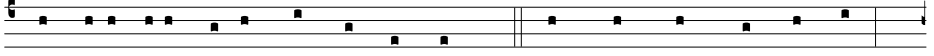
sighing of the poor, 6. I will up, saith the Lord: and will help ev - ery one



from him that swelleth against him, and will set him at rest. 7. The words of



the Lord are pure words: even as the silver, which from the earth is tri - ed,



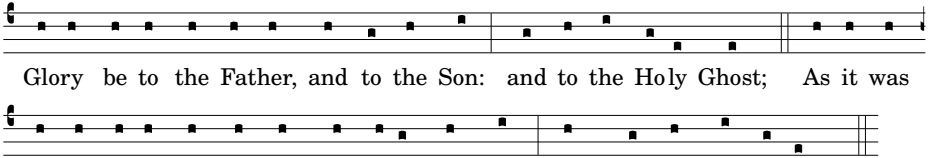
and puri - fied seven times in the fire. 8. Thou shalt keep them, O Lord:



thou shalt preserve him from this generation for ever. 9. The ungodly walk on



every side: when they are exalted, the children of men are put to rebuke.



Glory be to the Father, and to the Son: and to the Holy Ghost; As it was
in the beginning, is now, and ever shall be: world without end. Amen

The image shows two staves of musical notation. The first staff contains the lyrics: "Glory be to the Father, and to the Son: and to the Holy Ghost; As it was". The second staff contains the lyrics: "in the beginning, is now, and ever shall be: world without end. Amen". The notation consists of square notes on a five-line staff, with a treble clef and a common time signature (C) at the beginning of each staff. There are bar lines separating the phrases.