

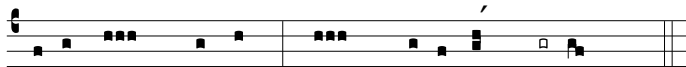
# The Sarum Tonale

## with the tones used for the psalter in the Manual of Plainsong

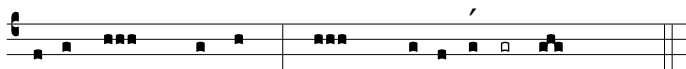
1902

|     | +1    | +2    | +3    | +4   | +5    | +6    | +7    | +8    | +9    | +10   |
|-----|-------|-------|-------|------|-------|-------|-------|-------|-------|-------|
| 0   | i1    | v1    | viii2 | ii1  | i4    | ii1   | i1    | viii1 | vi    | iv4   |
| 10  | vii2  | iv4   | iii4  | iv6  | iv4   | i1    | ii1   | i2    | iii5  | vii5  |
| 20  | vi    | ii1   | viii1 | vii5 | i1    | vi    | vi    | iv4   | viii1 | viii1 |
| 30  | iii5  | vi    | v1    | vii2 | i1    | ii1   | i4    | i8    | ii1   | vi    |
| 40  | iv1   | iii4  | iii4  | i2   | viii2 | v1    | vii4  | viii1 | iv8   | iii2  |
| 50  | iv4   | vii7  | iv6   | vi   | i8    | i2    | viii1 | ii1   | iii5  | vi    |
| 60  | iv4   | iv7   | viii3 | ii1  | viii1 | i3    | vii2  | v1    | iv4   | ii1   |
| 70  | iii2  | viii2 | i4    | vii7 | vi    | vii5  | ii1   | i4    | vii1  | iv4   |
| 80  | v1    | viii2 | iv5   | i2   | vii7  | iv8   | i5    | ii1   | i1    | vi    |
| 90  | viii1 | i2    | v3    | iv5  | iii4  | viii2 | v1    | i5    | iv4   | viii1 |
| 100 | i2    | ii1   | viii2 | iii2 | vii6  | vi    | i2    | viii2 | ii1   | iii2  |
| 110 | viii2 | vii5  | v2    | tp   | tp    | ii1   | vii5  | vi    | below | vii6  |
| 120 | vii6  | iv6   | ii1   | vii2 | vii2  | iv6   | ii1   | ii1   | iv4   | iv6   |
| 130 | iv6   | v1    | i1    | i1   | vii5  | iii6  | ii1   | iii2  | i8    | iii5  |
| 140 | viii1 | vi    | vii1  | i2   | vii5  | viii2 | viii1 | vii6  | iii5  | viii2 |

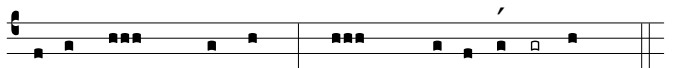
I 2



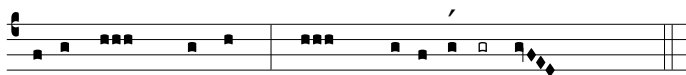
I 3



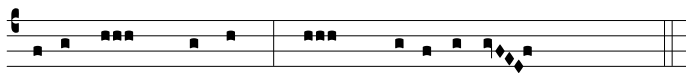
I 4



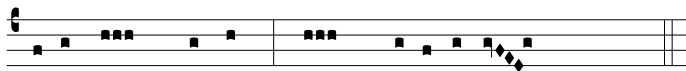
I 5



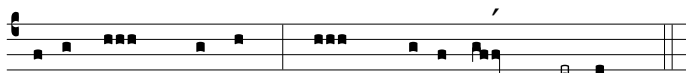
I 6



I 7



I 8







## IV 6

